



**Lancashire Standing Advisory Council on Religious Education (SACRE)**

**Monday, 1st February, 2021 at 10.00 am to be held as a Virtual Zoom Meeting**

**Agenda**

**No. Item**

**Part 1 (Open to Press and Public)**

- 1. Apologies**
- 2. Minutes of the last meeting** (Pages 1 - 6)
- 3. Pupil Visits Policy Feedback**
- 4. Agreed Syllabus Conference Feedback**
- 5. Collective Worship Group Feedback and Next Steps**
- 6. LA Officer Verbal Report and Newsletter** (Pages 7 - 14)
- 7. Lancashire Youth Voice**
- 8. Correspondence**
- 9. Members' News**
- 10. Observers' Contributions**
- 11. Date of Next Meeting**

The next scheduled meeting of the SACRE will be held at 10.00am on Monday 26 April 2021.

Paul Bond  
Clerk to the SACRE

County Hall  
Preston



# Agenda Item 2

## **Lancashire Standing Advisory Council on Religious Education (SACRE)**

**Minutes of the Meeting held on Monday, 30th November, 2020 at 10.00 am  
in Zoom Virtual Meeting - Zoom**

### **Attendees**

**Teachers Associations**                      The Chair, Mr Peter Martin (ASCL)

**Lancashire County Council**              County Councillor Anne Cheetham  
County Councillor Yousuf Motala  
County Councillor Peter Steen

**Church of England**                      Mr John Wilson  
Mrs Joan E O'Rourke  
Mrs Helen Sage

**Roman Catholic Church**                Mr Ben McMullen

**Methodist**                                  Professor Alan Gillies

**Hinduism**                                  Mrs Harsha Shukla  
Mr Ishwer Tailor

**Islam**                                        Mufti Khalid Ibrahim

**Buddhism**                                 Kelsang Pagba

**Jewish**                                        Robert Ash

**Blackburn Diocesan Board  
of Education**                                Ms Lisa Horobin

**Higher Education Sector**                Carolyn Reade

### **Co-optee Non-Voting**

**LASGB**                                      Mrs Kathleen Cooper

### **Community Representatives**

**Burnley Building Bridges**                Sajda Majeed

### **Observers**

**Bahá'i Faith**                                Dr Malcolm Craig

**Officers**

Mrs Alison Lloyd – School Advisor, Lancashire County Council

Mrs Misbah Mahmood – Senior Democratic Services Officer, Lancashire County Council

Garth Harbison – Democratic Services Support Officer, Lancashire County Council

**1. Annual General Meeting: Election of Chair and Deputy Chair**

Peter Martin was proposed and seconded to be elected as Chair and County Councillor Yousuf Motala was proposed and seconded to be elected as Vice Chair.

**2. Apologies**

Apologies were received from County Councillor Azhar Ali OBE, Mrs Tibret Safraz, Sally Elton-Chalcraft and Mr Francis Williams.

**3. Minutes of the last meeting held on 5 October 2020**

The minutes of the last meeting held on 5 October 2020 were agreed as a true and accurate record.

**4. Draft Annual Report**

The Draft Annual Report had been circulated prior to the meeting. SACRE members were asked if they thought anything had been omitted or if there were any errors in the report.

It was felt that instead of stating the role of SACRE was to provide advice on all aspects of Religious Education in Lancashire schools, it should read Lancashire maintained schools.

The SACRE thanked Mrs Alison Lloyd, School Advisor, for the quality of the report she had produced.

It was approved by the SACRE that the report could now be forwarded to the DfE and the NASACRE.

**5. Agreed Syllabus Conference**

An email had been sent out to the four members who had volunteered to be part of the Agreed Syllabus Conference and the 16 December 2020 had been agreed as the first meeting date.

The four volunteers were Peter Martin, County Councillor Anne Cheetham, Helen Sage, Lisa Horobin and Harsha Shukla.

There was a request for all three representative groups, excluding county councillors, to take a vote to ask the local authority to agree to an Agreed Syllabus Conference taking place, so as to review the syllabus for the next 5 year period. This was agreed.

The SACRE was informed that a report would go to Cabinet on 3 December 2020 requesting the Agreed Syllabus Conference.

After the first meeting the group would establish how many more meetings of the conference were required to get this piece of work done. The deadline for the Agreed Syllabus was September 2021. A draft version of the syllabus would come back to SACRE for comments and the final version would then go back to Cabinet.

## **6. Feedback from Chair - NASACRE Conference**

The Chair informed members that he had attended the NASACRE conference online. This was an Extraordinary meeting of NASACRE as the original planned conference had been cancelled due to the pandemic.

NASACRE was an important body which had a national voice. Its two main champions had worked in the sociology of religion and the study of the effect of religious observance over recent years. They were Professor Linda Woodhead from Lancaster University and the Rt Hon. Charles Clarke.

The NASACRE had an acting Chair at the moment, Linda Rudge, who had been a teacher of RE and a teacher trainer of RE at university level. She spoke about her hopes for the future of RE.

The conference also discussed a lot of procedural matters around the formation of the executive committee for NASACRE.

The main part of the conference was two presentations in relation to the Westhill NASACRE awards. The Westhill Awards donated sums up to £4,000 for the promotion of RE within a given local authority. During the last year the two awards were made to Cumbria SACRE and to Newham SACRE.

The Newham presentation was about how they were promoting the visiting of religious locations and places of worship within and outside of their local authority area. This was akin to the work done over the last few years by the Faith Centre in Burnley and Building Bridges Burnley. Newham was a multi-cultural local authority.

The award to Cumbria was to a local authority which was much more mono-cultural. Their work had been more classroom based. There would be lessons to

be learned for Lancashire SACRE when NASACRE published its report on its website.

## **7. Feedback relating to School Visit Policy**

Dr Malcolm Craig and John Wilson were thanked for all the work they had done in developing the School Visit Policy.

It was noted that they had drawn heavily on the pro forma of the Enfield School Visits Policy and refined it. A few extras on protection and child safeguarding had been added. The draft policy was changed slightly as the emphasis of the Enfield policy was on religious education and not so much on collective worship or on school ethos and values. The policy had also been amended to reflect visits to primary schools.

It was suggested that it might be useful for members of SACRE when visiting schools to wear badges and whether or not they would need DBS clearance. It was clarified that if members were supervised throughout the whole visit then they would not require a DBS but if they were going to talk to pupils separately then a DBS would be required. It was felt that if a DBS was required then the visits would be more complicated. It was noted that with previous school visits SACRE members were accompanied at all times.

It was suggested that the draft School Visits Policy be circulated to SACRE members for comments and then it could be finalised at the next meeting.

## **8. Faith Engagement Consultation**

It was noted that the Government had appointed a Faith Engagement Advisor, who had launched an open consultation to collect views and comments from various groups that would underpin a Faith Engagement Review. There was an online form for these groups to complete. The groups the advisor was interested in hearing from were:

- Members of the public who identified as having a religion, or people who had a faith.
- Faith and religious leaders (voluntary or professional) in places of worship or faith-based organisations and charities.
- Public servants such as civil servants, teachers, the police and healthcare workers.
- Anyone who was or had been engaged with the British Military in any capacity.
- Anyone who was or had been engaged in the Criminal Justice system in any capacity.

There were four main sections to the consultation.

- Are faith groups and places of worship forces for good in society.

- The extent to which Government and its agencies had sufficient faith literacy.
- Areas where harm might be caused through religious or faith based practices.
- A set of recommendations for the Government to consider regarding these.

SACRE members would be provided with the link to complete the questionnaire. The consultation closed on 11 December 2020.

## **9. Collective Worship Review**

Members were informed of the SACRE Development Plan which was a two year plan and needed to be reviewed at the end of this academic year.

One thing not touched upon in the plan was to look at collective worship materials.

A good starting point for review would be to evaluate what was on the Lancashire SACRE website. Volunteers were asked for to look at what was on the website to do with Collective Worship and also to look at what other SACREs were doing so as to refine the Collective Worship materials.

County Councillor Anne Cheetham, Helen Sage, Kathleen Cooper and Ben McMullen volunteered to look at the Collective Worship materials on the Lancashire SACRE website.

## **10. Proposed Dates of Meetings for 2021**

The proposed dates for the Lancashire SACRE and QSS meetings for 2021 were as follows:

### **SACRE**

Monday 1 February 2021 10.00am  
 Monday 26 April 2021 10.00am  
 Monday 5 July 2021 10.00am  
 Monday 27 September 2021 10.00am  
 Monday 29 November 2021 10.00am

### **QSS**

Wednesday 17 March 2021 10.00am  
 Wednesday 9 June 2021 10.00am  
 Wednesday 8 September 2021 10.00am  
 Wednesday 1 November 2021 10.00am

It was important for SACRE members to note these dates and check they did not conflict with any religious festivals or other reasons. The meetings would be online for the foreseeable future.

### **11. Lancashire Youth Voice**

There was nothing to feedback on Lancashire Youth Voice but it was felt that it was important to keep it on the agenda.

The question of how the Lancashire Youth Voice could fit into the review of the Agreed Syllabus was raised and also how it could fit into the Collective Worship advice and materials.

### **12. Correspondence**

There was no correspondence.

### **13. Members' News**

Ishwer Tailor explained that under the current pandemic situation his temple was allowing people in for private prayers only. The isolation of the temple's members was becoming a concern. The needs of the community were being dealt with through Zoom meetings. A number of festivals had been celebrated through Zoom and there had been good feedback about this.

Dr Malcolm Craig explained that despite the constraints of the pandemic there still managed to be a successful Interfaith Week. It was also noted that World Interfaith Harmony Week would commence on the first week of February 2021.

It was pointed out that the Interfaith Network had run a 'Buddy System' across the country.

A lot of the faith communities had come together during the pandemic to support the vulnerable people.

### **14. Observers' Contributions**

There were no Observers' Contributions.

### **15. Date of Next Meeting**

The next meeting of the SACRE would be held at 10:00am on Monday 1 February 2021.

Paul Bond  
Clerk to the SACRE

County Hall  
Preston





## SACRE NEWSLETTER

(Issue 7) Spring 2021

### Happy New Year!

After a very exhausting and difficult autumn term we're all yearning for more positive times. We hope that the resources and articles below inspire you for the term ahead when teaching R.E.

### Contents

#### Page 2

[Free Area Network Meetings](#)

[Working on racial equality and promoting cultural development?](#)

[Looking for some socially distance RE activities?](#)

[Awareness days](#)

#### Page 3

[School Website](#)

[NATRE Strictly RE Conference](#)

#### Page 4

[World Interfaith Harmony Week](#)

[SACRE Annual Report](#)

[How to teach Islam confidently](#)

[Do quizzes work?](#)

#### Page 5

[Persona Dolls](#)

[Motivated to improve your own subject knowledge?](#)

[Sharing Good Practice](#)

[Islam Resources](#)

#### Page 6

[Looking for some inspiration?](#)

[Teachers Talk](#)

[NATRE Anti-Racist Resources for RE](#)

[RE Definitions - a new app for RE teachers](#)

[Relationships Education, Relationships and Sex](#)

[Education \(RSE\) and Health Education \(RSHE\) Resources](#)

#### Page 7

[Looking for a local place of worship to visit?](#)

[Wanting to track down a suitably vetted faith speaker?](#)

[Religions of the World](#)

[Farmington Scholarships](#)

[Needing Help?](#)

Twitter: Lancashire SACRE @LancsSACRE

[www.lancsngfl.ac.uk/curriculum/re](http://www.lancsngfl.ac.uk/curriculum/re)

### Syllabus Review

Many of you will be aware that the RE syllabus has to be legally reviewed every 5 years. As the current syllabus was launched in 2016 a review is already underway and will be completed ready for September 2021.

The intention is NOT to make fundamental changes to the syllabus but to re launch it in a more user friendly format together with a range of additional materials to support delivery. The Field of Enquiry will remain but will be supplemented with a range of new resources to align Religious Education to the current Education Inspection Framework.

Depending on C19 constraints it is hoped to provide training to schools in the summer term 2021 and gather views informally via network meetings.

Please make a note in your diaries that the password to the website will be changed in September 2021 .

## Free Area Network Meetings

We have found it difficult to run the normal area network meetings during the pandemic, especially as our consultants are school based.

We are now in a position to offer an online network session via Zoom on 9<sup>th</sup> February from 3.30- 4.30pm. The purpose of the session will be for teachers to ask questions about the implementation of the syllabus, share good practice and discuss challenges and dilemmas with consultants and colleagues from other schools.

Please book via LPDS as usual using the following reference: REL102o - FREE Area Network Meetings for Religious Education - Online

## Looking for some socially distance RE activities?

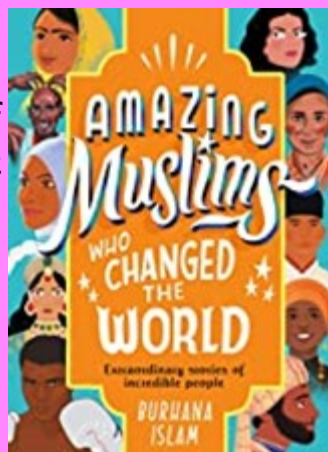
These flexible suggestions for teachers provide outdoor or socially distanced learning ideas for groups of pupils in the 5-14 age range. The activities can be tailored to your needs, lead on to individual work at desks, but bring some energy, movement and interaction from RE to the class.

[https://www.natre.org.uk/about-natre/free-resources-for-you-and-your-pupils/socially-distanced-learning/?utm\\_source=emailmarketing&utm\\_medium=email&utm\\_campaign=primary\\_natre\\_members\\_newsletter\\_with\\_download\\_december\\_2020&utm\\_content=2020-12-29](https://www.natre.org.uk/about-natre/free-resources-for-you-and-your-pupils/socially-distanced-learning/?utm_source=emailmarketing&utm_medium=email&utm_campaign=primary_natre_members_newsletter_with_download_december_2020&utm_content=2020-12-29)

## Working on racial equality and promoting cultural development? Looking for role models from other faiths? This book might be useful.....

From global icons like Muhammad Ali and Malala Yousafzai, to lesser known pioneers such as Sultan Razia and Noor Inayat Khan,

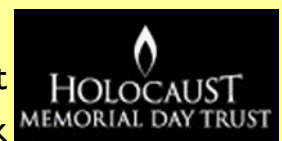
**Amazing Muslims Who Changed the World** highlights the incalculable achievements of Muslims throughout history.



## Awareness days

Did you know that it is **World Religion Day** on 16<sup>th</sup> January and **Holocaust Memorial Day** on 27<sup>th</sup> January (the anniversary of the date of the liberation of Auschwitz-Birkenau)?

Interested in significant days that you can mark in class for 2021?



To find information about how to celebrate these and other significant days visit:

<https://www.awarenessdays.com/awareness-days-calendar/category/2021/>

<http://projectbritain.com/specialdays/jan.htm>

## School Website

To ensure you are fulfilling your statutory obligations **you MUST** publish on your website the content of your school curriculum in each academic year for every subject, **including Religious Education.**

NATRE have published a useful document for SACREs to support their evaluations of school websites. This document clarifies the level of detail needed to meet this obligation. This document is now accessible via the RE website under the subject leader tab.

When explaining your curriculum intent the following documents are useful and are already accessible via the website:

**Long term curriculum map from YR –Y6**

**Knowledge and skills progression overviews.**

## NATRE Strictly RE Conference

The NATRE **Strictly RE Conference** is being hosted online this year.

**Everything you love about Strictly RE without having to leave your home!!**

Places are going fast; if you haven't already, don't forget to book and take part in the RE event of the year...

- 24 seminars
- 4 Keynotes
- Downloadable e-resources
- Access recorded seminars post-event
- Complimentary seminars running up to the main event!

Date: 30 & 31 January 2021

Location: Online

Full price: £100\*

**\*NATRE member discounts available!**

**Book via the NATRE site** <https://www.natre.org.uk/courses-events/strictlyRE-2021/>

Guidance for teacher members on SACREs for making judgements about RE on primary school websites:

Exceptional practice	Green (good or better RE)	Amber (unclear as to the quality of RE)	Red (concerns as to whether RE is being taught)
Excellent levels of detail on RE curriculum plans, which may include additional information about what will happen in RE lessons. You may also see reference to skills being taught and how it builds on prior learning.	The level of detail published on the RE curriculum plans for each year group is at least comparable to that for foundation subjects such as History and Geography (even if the subject is called something else)	The level of detail published on the RE curriculum is not comparable to that for foundation subjects such as History and Geography	The curriculum map does not give the reader a clear indication of what will be taught. For example, A list of religions or belief is provided with no indication about the content of the study
There is a clear and detailed statement of their compliance with their Agreed Syllabus or in the case of academies, the syllabus they have chosen to follow.	The school includes a statement of their compliance with their Agreed Syllabus or in the case of academies, the syllabus they have chosen to follow	There is no reference to the syllabus followed	There is no reference to the syllabus followed
RE features regularly on the website and may include photos of learning, visits and visitors, parent views and pupil feedback.	There are regular references to RE on the website	There is a little reference to RE on the website	There is no reference to RE on the website
There is a clear and detailed explanation of how RE supports spiritual, moral, social and cultural development and fundamental British values.	There is a clear explanation of how RE supports spiritual, moral, social and cultural development and fundamental British values.	There is little reference to how RE supports spiritual, moral, social and cultural development and fundamental British values.	There is no reference to how RE supports spiritual, moral, social and cultural development and fundamental British values.
A very clear and detailed statement of the aim, purpose or intent of RE.	A clear statement of the aim, purpose or intent of RE.	The aim, purpose or intent of RE is unclear.	There is no statement of the aim, purpose or intent of RE.
It is very easy to discover how parents or other members of the public can find out more about the RE curriculum the school is following.	It is easy to discover how parents or other members of the public can find out more about the curriculum the school is following.	It is difficult for parents to navigate the website to find out more about the curriculum the school is following.	It is impossible for parents or other members of the public to find out more about the curriculum the school is following.
There is a discrete policy for RE on the website which includes a statement of the aims for the subject and the right to withdraw.	There is a policy for RE on the website which includes a statement of the aims for the subject and the right to withdraw.	There is a policy for RE on the website but no statement of the aims of the subject aims and/or the right to withdraw.	There is no policy for RE on the website
<b>Action: Send a congratulatory letter to the school on their excellent RE.</b>	<b>Action: Send a letter of congratulations and support for the good RE in the school.</b>	<b>Action: Send a letter of mild concern and support.</b>	<b>Action: Send a letter of serious concern. State SACRE's statutory duty and the school's need to be compliant with the law which states that all pupils in England must receive Religious Education.</b>

This work was inspired by an activity conducted by Bristol SACRE

## World Interfaith Harmony Week

As usual, towards the end of the autumn term the Preston and Lancashire Faith forums organise a number of events to mark UK National Interfaith Week. More information can be found here: <https://www.interfaith.org.uk/>

### **In February this is supplemented by a World Interfaith Harmony week**

<https://worldinterfaithharmonyweek.com/> which aims to spread the message of Interfaith harmony and goodwill across all places of worship.

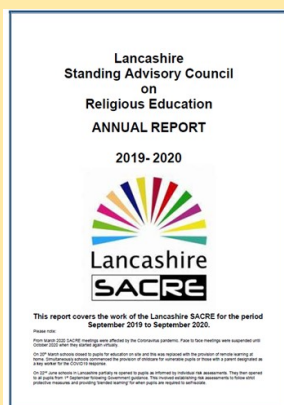
If your school wishes to take part you can find a range of resources by exploring the following links:

Themes and events from previous years can be found at <https://www.un.org/en/observances/interfaith-harmony-week>

R.E. materials can be found also at [https://globaldimension.org.uk/resources/search/?fwp\\_subject=re-rs](https://globaldimension.org.uk/resources/search/?fwp_subject=re-rs)

## SACRE Annual Report

An abridged version of the SACRE Annual Report is now complete and available to download from the SACRE website. Please follow this link [http://www.lancsngfl.ac.uk/curriculum/re/index.php?category\\_id=79](http://www.lancsngfl.ac.uk/curriculum/re/index.php?category_id=79)

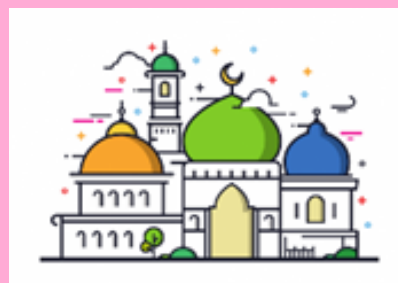


## How to teach Islam confidently

This blog from Lat Blaylock is worth a read and signposts to a range of resources.

[https://www.teachwire.net/news/primary-re-resources-how-to-confidently-teach-about-islam-in-ks2?](https://www.teachwire.net/news/primary-re-resources-how-to-confidently-teach-about-islam-in-ks2?utm_source=emailmarketing&utm_medium=email&utm_campaign=primary_natre_members_newsletter_with_download_december_2020&utm_content=2020-12-29)

[utm\\_source=emailmarketing&utm\\_medium=email&utm\\_campaign=primary\\_natre\\_members\\_newsletter\\_with\\_download\\_december\\_2020&utm\\_content=2020-12-29](https://www.teachwire.net/news/primary-re-resources-how-to-confidently-teach-about-islam-in-ks2?utm_source=emailmarketing&utm_medium=email&utm_campaign=primary_natre_members_newsletter_with_download_december_2020&utm_content=2020-12-29)



## Do quizzes work?

Research from psychologists such as Robert Bjork and Daniel Willingham provides evidence that repetition in learning is essential for remembering. Quizzing is more effective in remembering than restudying and repeated quizzing is even more effective. However, we acknowledge it is important to ensure RE is not reduced to rote-learning or 'pub-style' quizzes.

For a selection of ready-made RE Quizzes: [https://www.natre.org.uk/uploads/NATRE%20exec%20resources/Quizzes%20for%20RE%20learning.pdf?](https://www.natre.org.uk/uploads/NATRE%20exec%20resources/Quizzes%20for%20RE%20learning.pdf?utm_source=emailmarketing&utm_medium=email&utm_campaign=primary_natre_members_newsletter_with_download_november_2020&utm_content=2020-12-29)

[utm\\_source=emailmarketing&utm\\_medium=email&utm\\_campaign=primary\\_natre\\_members\\_newsletter\\_with\\_download\\_november\\_2020&utm\\_content=2020-12-29](https://www.natre.org.uk/uploads/NATRE%20exec%20resources/Quizzes%20for%20RE%20learning.pdf?utm_source=emailmarketing&utm_medium=email&utm_campaign=primary_natre_members_newsletter_with_download_november_2020&utm_content=2020-12-29)



## Persona Dolls

The new EYFS units include references to the use of Persona dolls. This involves introducing children from different religions in the form of large dolls with an aim of promoting the equality agenda. Dolls are toddler size and come with their own individual personalities.

Although dolls usefully enhance learning and can be purchased from a variety of places (see links below) they are not compulsory and other homemade puppets or resources can be used instead to bring learning to life .



If you are interested in purchasing some Persona Dolls or reading up on the approach links are as follows:

[https://shop.retoday.org.uk/  
category/artefact.pr](https://shop.retoday.org.uk/category/artefact.pr)

[https://  
shop.christianeducation.org.uk/160114](https://shop.christianeducation.org.uk/160114)

[https://www.teachingforchange.org/wp-  
content/uploads/2012/08/  
ec\\_personadolls\\_english.pdf](https://www.teachingforchange.org/wp-content/uploads/2012/08/ec_personadolls_english.pdf)

[https://documents.hants.gov.uk/education/  
PersonaDollShiny.pdf](https://documents.hants.gov.uk/education/PersonaDollShiny.pdf)

## Motivated to improve your own subject knowledge?

**TeachRE** provides a range of training opportunities.

For free self-study for NQTs and HLTAs to improve subject knowledge in the teaching of RE visit:

[https://www.teachre.co.uk/teach-re-  
course/teachre-primary/](https://www.teachre.co.uk/teach-re-course/teachre-primary/)

## Sharing Good Practice

Are you really proud of your RE teaching and pupil outcomes? Have you something worth celebrating? Have you good ideas that are worth sharing?

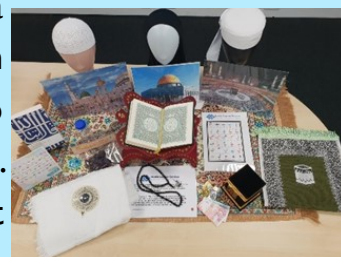
Do you want to share your practice with other schools via the RE website or newsletter?

We'd love to hear from you. Don't be shy.. please contact:

[advisory.support@lancashire.gov.uk](mailto:advisory.support@lancashire.gov.uk)

## Islam Resources

Imran Kotwal is a popular Muslim faith visitor to schools in Cumbria. Do take a look at his new website



which has resources and training for Islam.

<https://www.islamresources.co.uk/>

## Looking for some inspiration?

Don't forget the excellent resources available via <https://www.reonline.org.uk/>

**This includes a free online calendar of the major festivals.**

## Teachers Talk

TEACHERS talk – is a space for teachers of RE to share their views, ideas and discuss topical issues relating to Religious Education (RE).

This blog has been set up by NATRE – National Association of Teachers of RE on behalf of teachers across the region. Bloggers on the site are made up of primary, middle, secondary teachers and RE advisers with a range of experience who work in different fields including LTLRE, SACRE, AREIAC, NATRE, NLE and dioceses. Take a look using the following link:

<https://teachers-talk.natre.org.uk/>



## NATRE Anti-Racist Resources for RE

This project has been generously supported by the Free Churches Group and Methodist Schools, and managed, written and edited by Lat Blaylock, RE Adviser and editor of RE Today magazine.

<https://www.natre.org.uk/about-natre/projects/anti-racist-re/>

## RE Definitions - a new app for RE teachers

RE-Definitions is a new app for RE teachers giving handy access to the pronunciation and meaning of more than 200 key terms. As an app on mobiles and tablets, and as a website on PCs, it's for non-specialists who want to understand the words and how to pronounce them with confidence and for specialists who want to brush up on their knowledge. RE-Definitions provides accurate, clear, **resource-linked** definitions of key terms in seven religions and beliefs, in ethics and philosophy and in the study of religions and beliefs.

Visit the website at:

<http://re-definitions.org.uk>

## Relationships Education, Relationships and Sex Education (RSE) and Health Education (RSHE) Resources

The Church of England has produced faith sensitive and inclusive Relationships Education, Relationships and Sex Education (RSE) and Health Education (RSHE) resources and guidance.

<https://www.churchofengland.org/about/education-and-schools/church-schools-and-academies/relationships-sex-and-health-education>



**Looking for a local place of worship to visit? Wanting to track down a suitably vetted faith speaker?**

**Building Bridges** is working in partnership with Lancashire SACRE to provide schools with specialist support to bring Religious Education to life and promote community cohesion.

Schools can get support with faith visits and visitors, special assemblies and promoting British values. For further information click [here](http://www.lancsngfl.ac.uk/curriculum/re/index.php?category_id=5) [http://www.lancsngfl.ac.uk/curriculum/re/index.php?category\\_id=5](http://www.lancsngfl.ac.uk/curriculum/re/index.php?category_id=5)

## Religions of the World

Religions of the World is a collection of animated films exploring the origins and stories of a variety of religions.

Alongside each, there is more information about the content of the film, and suggestions of how it could be used in the classroom.

These resources are suitable for use with pupils aged 3-7.

To access just search 'BBC Religions of the World ' or follow this link:

<https://www.bbc.co.uk/programmes/articles/1pYRg2f202rqWHrp3ywhTyX/religions-of-the-world>



## Farmington Scholarships

Applications for the 2021/22 Farmington Scholarships are now open. These are Scholarships available to teachers of Religious Education and associated subjects in UK secondary, primary, and special needs schools. Head teachers who wish to undertake research into either religious education or values education are also eligible to apply.

Scholarships cover the cost of tuition, essential local travel and, by negotiation with the school, the salary of a replacement teacher up to point 6 of the main pay scale. Scholarships last for a maximum of 30 days and can either be taken at a local university (we have links with 19 throughout England, Scotland, Wales and Northern Ireland) or can be home-based with a local tutor.

Further information and an application form can be found on <http://www.farmington.ac.uk/index.php/farmington-scholarships/> The closing date for applications is **Sunday 31st January 2021**.

## Needing Help?

Finding the Agreed Syllabus a challenge? Not sure how to assess in RE? Needing to increase subject knowledge of a specific religion? Wanting to raise the profile of RE in your school? Committed to developing the effectiveness of the subject leader for Religious Education?

To access support please contact:

[advisory.support@lancashire.gov.uk](mailto:advisory.support@lancashire.gov.uk)

